

## Overview

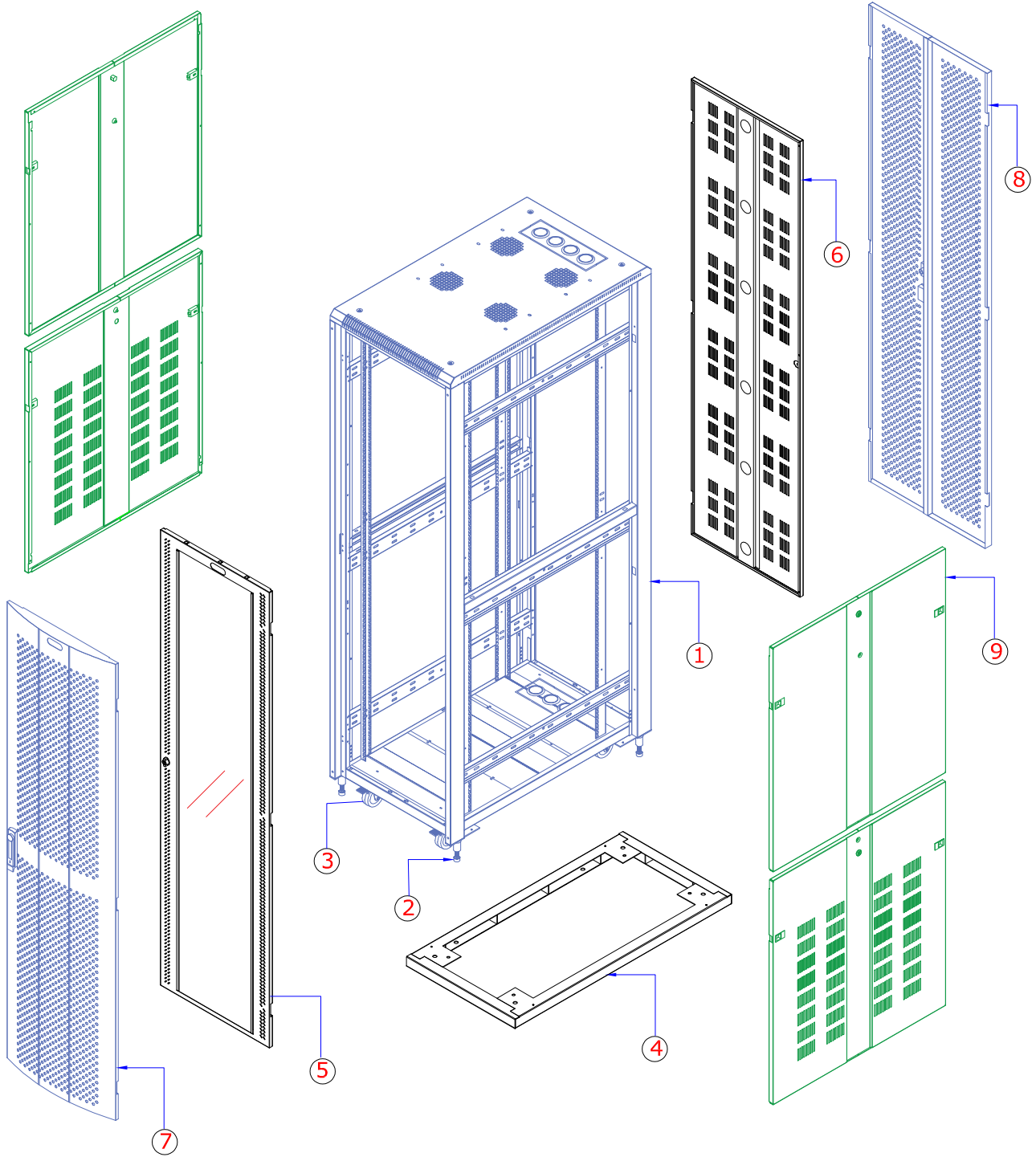
NRS Series, Rigid Racks for Servers, Networking, AV, Telecom & Lab application. Racks manufactured out of steel sheet punched, formed, welded and powder coated with highest quality standards under stringent ISO 9001 | ISO 14001 | ISO 27001 | ISO 45001 Manufacturing & Quality management system to ensure highest quality product.

Standard for Racks configuration will be welded frame with 4 no pillars of 7 folded profile welded to top and bottom ribbed/reinforced frame additionally supported depth wise by welding 6 no depth rail 4 folded profile. Associated with vented top cover with fan mounting provision Front Glass or perforated Metal Door with lock & Key and Back Vented / perforated metal door with lock & key and partially vented or Plain side panels 1200 deep rack will be configured with dual side panel. Free standing on floor with 4 No casters wheels with 2 No with brakes and 2 Nos. without brakes & with Levelers OR plinth.

Available in 6RU~52RU Variants with 650, 800,1000 & 1200 Depth configurations and 600 Width configurations.







1. Rack Frame
2. Levellers
3. Castors
4. Plinth
5. Glass Door
6. Metal Door
7. Perforated Door
8. Perforated Door Dual
9. Sidepanel Vented

Model Matrix & Dimensions

| NRS Series   | H    | h   | W   | w   | w1  | D    | d    | d1  | Caster Type | Plinth Height(MM) |
|--------------|------|-----|-----|-----|-----|------|------|-----|-------------|-------------------|
| 6U 600X650   | 411  | 6U  | 600 | 19" | 451 | 650  | 550  | 445 | TYPE-2      | 50/100            |
| 6U 600X800   | 411  | 6U  | 600 | 19" | 451 | 800  | 700  | 535 | TYPE-2      | 50/100            |
| 6U 600X1000  | 411  | 6U  | 600 | 19" | 451 | 1000 | 900  | 725 | TYPE-2      | 50/100            |
| 9U 600X650   | 544  | 9U  | 600 | 19" | 451 | 650  | 550  | 445 | TYPE-2      | 50/100            |
| 9U 600X800   | 544  | 9U  | 600 | 19" | 451 | 800  | 700  | 535 | TYPE-2      | 50/100            |
| 9U 600X1000  | 544  | 9U  | 600 | 19" | 451 | 1000 | 900  | 725 | TYPE-2      | 50/100            |
| 12U 600X650  | 677  | 12U | 600 | 19" | 451 | 650  | 550  | 445 | TYPE-2      | 50/100            |
| 12U 600X800  | 677  | 12U | 600 | 19" | 451 | 800  | 700  | 535 | TYPE-2      | 50/100            |
| 12U 600X1000 | 677  | 12U | 600 | 19" | 451 | 1000 | 900  | 725 | TYPE-2      | 50/100            |
| 15U 600X650  | 810  | 15U | 600 | 19" | 451 | 650  | 550  | 445 | TYPE-2      | 50/100            |
| 15U 600X800  | 810  | 15U | 600 | 19" | 451 | 800  | 700  | 535 | TYPE-2      | 50/100            |
| 15U 600X1000 | 810  | 15U | 600 | 19" | 451 | 1000 | 900  | 725 | TYPE-2      | 50/100            |
| 17U 600X650  | 899  | 17U | 600 | 19" | 451 | 650  | 550  | 445 | TYPE-2      | 50/100            |
| 17U 600X800  | 899  | 17U | 600 | 19" | 451 | 800  | 700  | 535 | TYPE-2      | 50/100            |
| 17U 600X1000 | 899  | 17U | 600 | 19" | 451 | 1000 | 900  | 725 | TYPE-2      | 50/100            |
| 22U 600X650  | 1121 | 22U | 600 | 19" | 451 | 650  | 550  | 445 | TYPE-2      | 50/100            |
| 22U 600X800  | 1121 | 22U | 600 | 19" | 451 | 800  | 700  | 535 | TYPE-2      | 50/100            |
| 22U 600X1000 | 1121 | 22U | 600 | 19" | 451 | 1000 | 900  | 725 | TYPE-2      | 50/100            |
| 22U 600X1200 | 1121 | 22U | 600 | 19" | 451 | 1200 | 1100 | 725 | TYPE-2      | 50/100            |
| 27U 600X650  | 1343 | 27U | 600 | 19" | 451 | 650  | 550  | 445 | TYPE-2      | 50/100            |
| 27U 600X800  | 1343 | 27U | 600 | 19" | 451 | 800  | 700  | 535 | TYPE-2      | 50/100            |
| 27U 600X1000 | 1343 | 27U | 600 | 19" | 451 | 1000 | 900  | 725 | TYPE-2      | 50/100            |
| 27U 600X1200 | 1343 | 27U | 600 | 19" | 451 | 1200 | 1100 | 725 | TYPE-2      | 50/100            |
| 32U 600X650  | 1565 | 32U | 600 | 19" | 451 | 650  | 550  | 445 | TYPE-2      | 50/100            |
| 32U 600X800  | 1565 | 32U | 600 | 19" | 451 | 800  | 700  | 535 | TYPE-2      | 50/100            |
| 32U 600X1000 | 1565 | 32U | 600 | 19" | 451 | 1000 | 900  | 725 | TYPE-2      | 50/100            |
| 32U 600X1200 | 1565 | 32U | 600 | 19" | 451 | 1200 | 1100 | 725 | TYPE-2      | 50/100            |
| 34U 600X650  | 1654 | 34U | 600 | 19" | 451 | 650  | 550  | 445 | TYPE-2      | 50/100            |
| 34U 600X800  | 1654 | 34U | 600 | 19" | 451 | 800  | 700  | 535 | TYPE-2      | 50/100            |
| 34U 600X1000 | 1654 | 34U | 600 | 19" | 451 | 1000 | 900  | 725 | TYPE-2      | 50/100            |
| 34U 600X1200 | 1654 | 34U | 600 | 19" | 451 | 1200 | 1100 | 725 | TYPE-2      | 50/100            |
| 36U 600X650  | 1743 | 36U | 600 | 19" | 451 | 650  | 550  | 445 | TYPE-2      | 50/100            |
| 36U 600X800  | 1743 | 36U | 600 | 19" | 451 | 800  | 700  | 535 | TYPE-2      | 50/100            |
| 36U 600X1000 | 1743 | 36U | 600 | 19" | 451 | 1000 | 900  | 725 | TYPE-2      | 50/100            |
| 36U 600X1200 | 1743 | 36U | 600 | 19" | 451 | 1200 | 1100 | 725 | TYPE-2      | 50/100            |
| 38U 600X650  | 1832 | 38U | 600 | 19" | 451 | 650  | 550  | 445 | TYPE-2      | 50/100            |
| 38U 600X800  | 1832 | 38U | 600 | 19" | 451 | 800  | 700  | 535 | TYPE-2      | 50/100            |
| 38U 600X1000 | 1832 | 38U | 600 | 19" | 451 | 1000 | 900  | 725 | TYPE-2      | 50/100            |
| 38U 600X1200 | 1832 | 38U | 600 | 19" | 451 | 1200 | 1100 | 725 | TYPE-2      | 50/100            |
| 40U 600X650  | 1921 | 40U | 600 | 19" | 451 | 650  | 550  | 445 | TYPE-2      | 50/100            |
| 40U 600X800  | 1921 | 40U | 600 | 19" | 451 | 800  | 700  | 535 | TYPE-2      | 50/100            |

| Model Matrix & Dimensions |      |     |     |     |     |      |      |     |             |                   |
|---------------------------|------|-----|-----|-----|-----|------|------|-----|-------------|-------------------|
| NRS Series                | H    | h   | W   | w   | w1  | D    | d    | d1  | Caster Type | Plinth Height(MM) |
| 40U 600X1000              | 1921 | 40U | 600 | 19" | 451 | 1000 | 900  | 725 | TYPE-2      | 50/100            |
| 40U 600X1200              | 1921 | 40U | 600 | 19" | 451 | 1200 | 1100 | 725 | TYPE-2      | 50/100            |
| 42U 600X650               | 2010 | 42U | 600 | 19" | 451 | 650  | 550  | 445 | TYPE-2      | 50/100            |
| 42U 600X800               | 2010 | 42U | 600 | 19" | 451 | 800  | 700  | 535 | TYPE-2      | 50/100            |
| 42U 600X1000              | 2010 | 42U | 600 | 19" | 451 | 1000 | 900  | 725 | TYPE-3      | 50/100            |
| 42U 600X1200              | 2010 | 42U | 600 | 19" | 451 | 1200 | 1100 | 725 | TYPE-3      | 50/100            |
| 44U 600X650               | 2099 | 44U | 600 | 19" | 451 | 650  | 550  | 445 | TYPE 3      | 50/100            |
| 44U 600X800               | 2099 | 44U | 600 | 19" | 451 | 800  | 700  | 535 | TYPE 3      | 50/100            |
| 44U 600X1000              | 2099 | 44U | 600 | 19" | 451 | 1000 | 900  | 725 | TYPE 3      | 50/100            |
| 44U 600X1200              | 2099 | 44U | 600 | 19" | 451 | 1200 | 1100 | 725 | TYPE 3      | 50/100            |
| 45U 600X650               | 2143 | 45U | 600 | 19" | 451 | 650  | 550  | 445 | TYPE-2      | 50/100            |
| 45U 600X800               | 2143 | 45U | 600 | 19" | 451 | 800  | 700  | 535 | TYPE 3      | 50/100            |
| 45U 600X1000              | 2143 | 45U | 600 | 19" | 451 | 1000 | 900  | 725 | TYPE 3      | 50/100            |
| 45U 600X1200              | 2143 | 45U | 600 | 19" | 451 | 1200 | 1100 | 725 | TYPE 3      | 50/100            |
| 48U 600X650               | 2276 | 48U | 600 | 19" | 451 | 650  | 550  | 445 | TYPE 3      | 50/100            |
| 48U 600X800               | 2276 | 48U | 600 | 19" | 451 | 800  | 700  | 535 | TYPE 3      | 50/100            |
| 48U 600X1000              | 2276 | 48U | 600 | 19" | 451 | 1000 | 900  | 725 | TYPE 3      | 50/100            |
| 48U 600X1200              | 2276 | 48U | 600 | 19" | 451 | 1200 | 1100 | 725 | TYPE 3      | 50/100            |
| 50U 600X650               | 2365 | 50U | 600 | 19" | 451 | 650  | 550  | 445 | TYPE 3      | 50/100            |
| 50U 600X800               | 2365 | 50U | 600 | 19" | 451 | 800  | 700  | 535 | TYPE 3      | 50/100            |
| 50U 600X1000              | 2365 | 50U | 600 | 19" | 451 | 1000 | 900  | 725 | TYPE 3      | 50/100            |
| 50U 600X1200              | 2365 | 50U | 600 | 19" | 451 | 1200 | 1100 | 725 | TYPE 3      | 50/100            |
| 52U 600X650               | 2454 | 52U | 600 | 19" | 451 | 650  | 550  | 445 | TYPE 3      | 50/100            |
| 52U 600X800               | 2454 | 52U | 600 | 19" | 451 | 800  | 700  | 535 | TYPE 3      | 50/100            |
| 52U 600X1000              | 2454 | 52U | 600 | 19" | 451 | 1000 | 900  | 725 | TYPE 3      | 50/100            |
| 52U 600X1200              | 2454 | 52U | 600 | 19" | 451 | 1200 | 1100 | 725 | TYPE 3      | 50/100            |

Note :

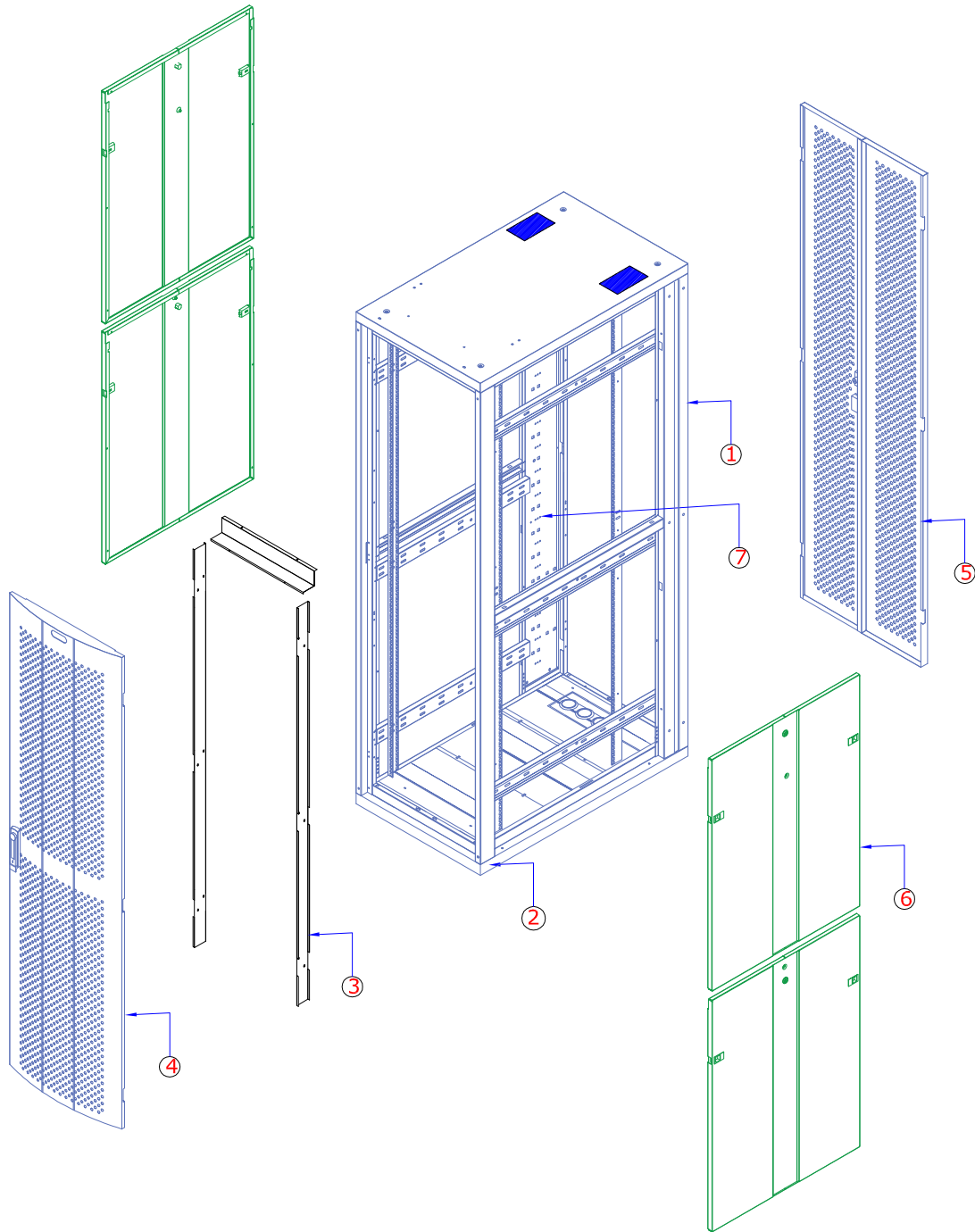
1. Overall Height = Frame Height+Plinth or Caster
2. It is recommended to distribute the Load along with U space in the Rack
3. Dimension are in MM

### Abbreviations

|   |    |
|---|----|
| Frame Height                              | H  |
| Usable Height                             | h  |
| Overall width                             | W  |
| Usable width                              | w  |
| Usable width Between Front MTG. Angles    | w1 |
| Overall Depth                             | D  |
| Usable Depth                              | d  |
| Usable Depth From Mounting Angle to Angle | d1 |

| Description | Height (MM) |
|-------------|-------------|
| TYPE-2      | 85          |
| TYPE-3      | 105         |

NRS 600W 002 Series



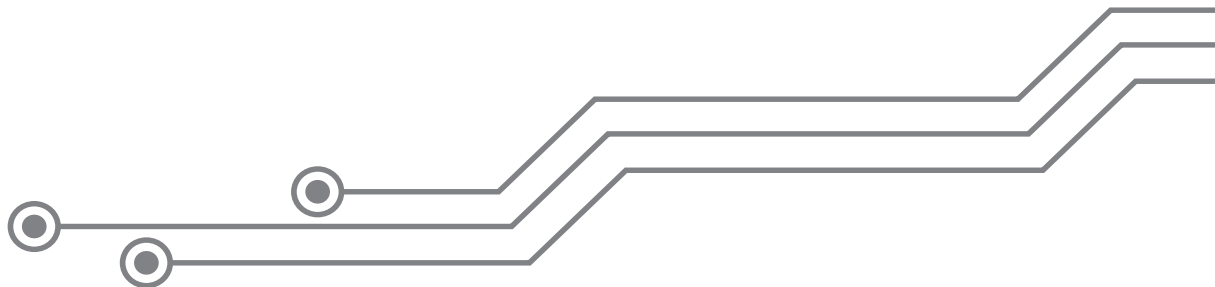
1. Rack Frame
2. Plinth
3. Front Air Seal Kit
4. Perforated Door
5. Perforated Door Dual
6. Side Panel
7. Combo Cable Basket 002

| Model Matrix & Dimensions |      |     |     |     |     |      |      |     |                   |
|---------------------------|------|-----|-----|-----|-----|------|------|-----|-------------------|
| NRS 002 Series            | H    | h   | W   | w   | w1  | D    | d    | d1  | Plinth Height(MM) |
| 22U 600X1100              | 1116 | 22U | 600 | 19" | 451 | 1100 | 1000 | 725 | 50/100            |
| 24U 600X1100              | 1205 | 24U | 600 | 19" | 451 | 1100 | 1000 | 725 | 50/100            |
| 27U 600X1100              | 1338 | 27U | 600 | 19" | 451 | 1100 | 1000 | 725 | 50/100            |
| 30U 600X1100              | 1471 | 30U | 600 | 19" | 451 | 1100 | 1000 | 725 | 50/100            |
| 32U 600X1100              | 1560 | 32U | 600 | 19" | 451 | 1100 | 1000 | 725 | 50/100            |
| 34U 600X1100              | 1649 | 34U | 600 | 19" | 451 | 1100 | 1000 | 725 | 50/100            |
| 36U 600X1100              | 1738 | 36U | 600 | 19" | 451 | 1100 | 1000 | 725 | 50/100            |
| 38U 600X1100              | 1827 | 38U | 600 | 19" | 451 | 1100 | 1000 | 725 | 50/100            |
| 40U 600X1100              | 1916 | 40U | 600 | 19" | 451 | 1100 | 1000 | 725 | 50/100            |
| 42U 600X1100              | 2005 | 42U | 600 | 19" | 451 | 1100 | 1000 | 725 | 50/100            |
| 44U 600X1100              | 2094 | 44U | 600 | 19" | 451 | 1100 | 1000 | 725 | 50/100            |
| 45U 600X1100              | 2135 | 45U | 600 | 19" | 451 | 1100 | 1000 | 725 | 50/100            |
| 46U 600X1100              | 2183 | 46U | 600 | 19" | 451 | 1100 | 1000 | 725 | 50/100            |
| 47U 600X1100              | 2227 | 47U | 600 | 19" | 451 | 1100 | 1000 | 725 | 50/100            |
| 48U 600X1100              | 2271 | 48U | 600 | 19" | 451 | 1100 | 1000 | 725 | 50/100            |
| 49U 600X1100              | 2316 | 49U | 600 | 19" | 451 | 1100 | 1000 | 725 | 50/100            |
| 50U 600X1100              | 2360 | 50U | 600 | 19" | 451 | 1100 | 1000 | 725 | 50/100            |
| 51U 600X1100              | 2405 | 51U | 600 | 19" | 451 | 1100 | 1000 | 725 | 50/100            |
| 52U 600X1100              | 2449 | 52U | 600 | 19" | 451 | 1100 | 1000 | 725 | 50/100            |

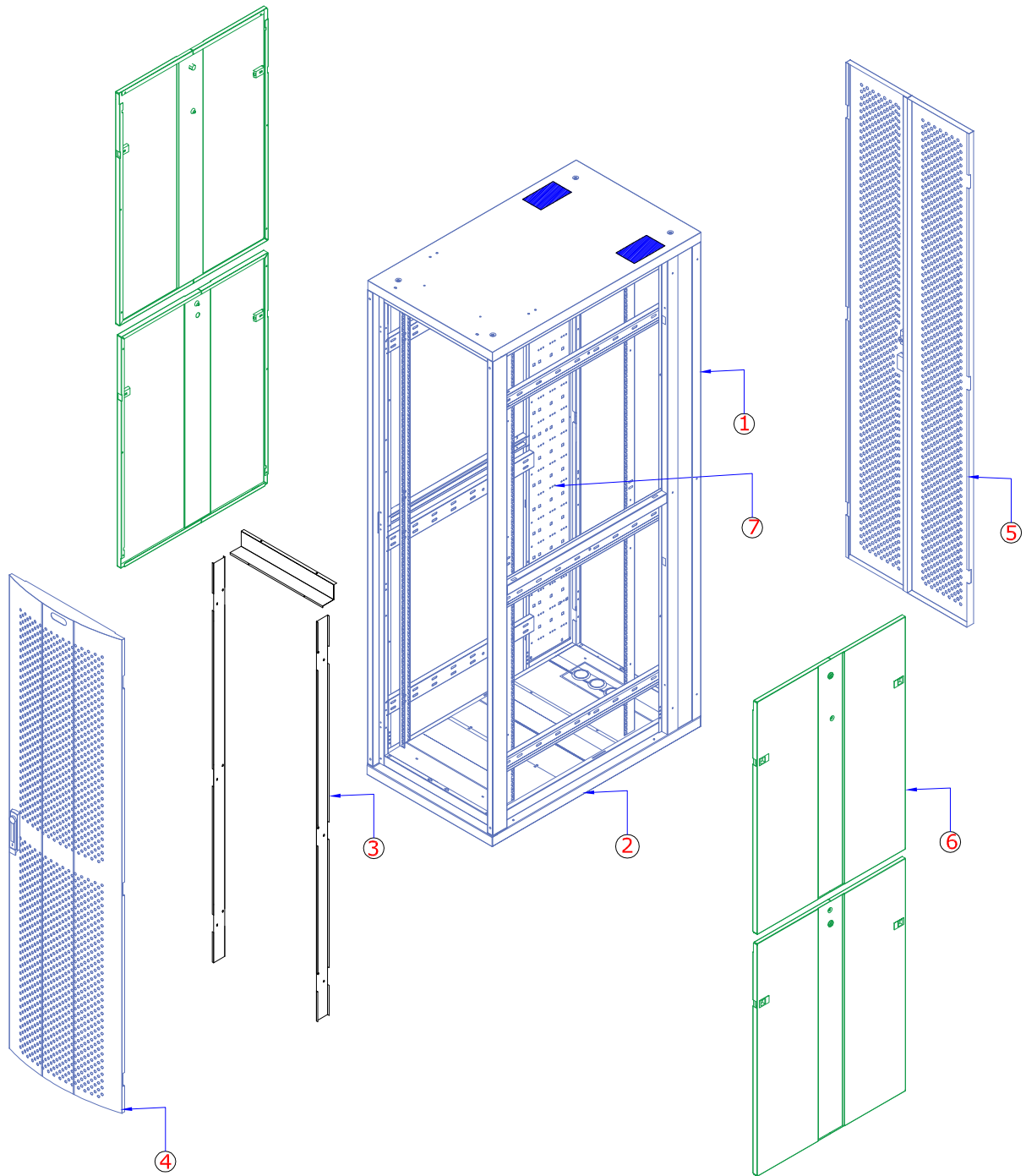
Note: 1. Overall Height = Frame Height + Plinth

**Abbreviations**

- H - Frame height
- h - Usable height
- W - Overall width
- w - Usable width
- w1 - Usable width Between Front MTG.Angles
- D - Overall Depth
- d - Usable Depth
- d1 - Usable Depth From Mounting Angle to Angle



NRS 600W 003 Series



1. Rack Frame
2. Plinth
3. Front Air Seal Kit
4. Perforated Door
5. Perforated Door Dual
6. Side Panel
7. Combo Cable Basket 003

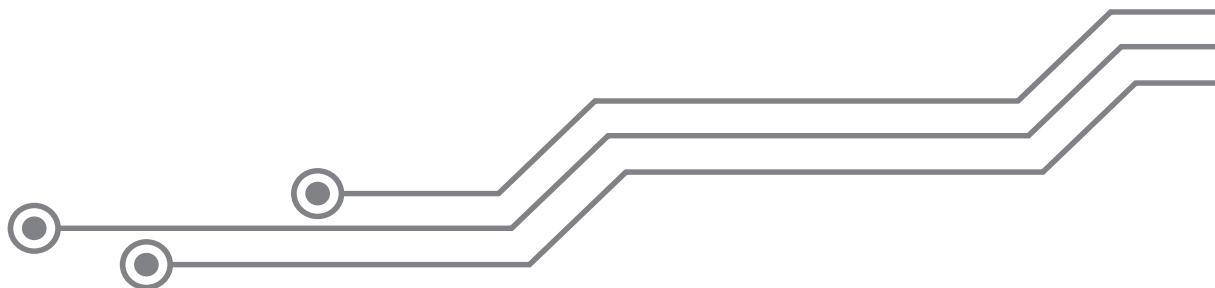


| Model Matrix & Dimensions |      |     |     |     |     |      |      |     |                   |
|---------------------------|------|-----|-----|-----|-----|------|------|-----|-------------------|
| NRS 003 Series            | H    | h   | W   | w   | w1  | D    | d    | d1  | Plinth Height(MM) |
| 22U 600X1200              | 1116 | 22U | 600 | 19" | 451 | 1200 | 1100 | 725 | 50/100            |
| 24U 600X1200              | 1205 | 24U | 600 | 19" | 451 | 1200 | 1100 | 725 | 50/100            |
| 27U 600X1200              | 1338 | 27U | 600 | 19" | 451 | 1200 | 1100 | 725 | 50/100            |
| 30U 600X1200              | 1471 | 30U | 600 | 19" | 451 | 1200 | 1100 | 725 | 50/100            |
| 32U 600X1200              | 1560 | 32U | 600 | 19" | 451 | 1200 | 1100 | 725 | 50/100            |
| 34U 600X1200              | 1649 | 34U | 600 | 19" | 451 | 1200 | 1100 | 725 | 50/100            |
| 36U 600X1200              | 1738 | 36U | 600 | 19" | 451 | 1200 | 1100 | 725 | 50/100            |
| 38U 600X1200              | 1827 | 38U | 600 | 19" | 451 | 1200 | 1100 | 725 | 50/100            |
| 40U 600X1200              | 1916 | 40U | 600 | 19" | 451 | 1200 | 1100 | 725 | 50/100            |
| 42U 600X1200              | 2005 | 42U | 600 | 19" | 451 | 1200 | 1100 | 725 | 50/100            |
| 44U 600X1200              | 2094 | 44U | 600 | 19" | 451 | 1200 | 1100 | 725 | 50/100            |
| 45U 600X1200              | 2135 | 45U | 600 | 19" | 451 | 1200 | 1100 | 725 | 50/100            |
| 46U 600X1200              | 2183 | 46U | 600 | 19" | 451 | 1200 | 1100 | 725 | 50/100            |
| 47U 600X1200              | 2227 | 47U | 600 | 19" | 451 | 1200 | 1100 | 725 | 50/100            |
| 48U 600X1200              | 2271 | 48U | 600 | 19" | 451 | 1200 | 1100 | 725 | 50/100            |
| 49U 600X1200              | 2316 | 49U | 600 | 19" | 451 | 1200 | 1100 | 725 | 50/100            |
| 50U 600X1200              | 2360 | 50U | 600 | 19" | 451 | 1200 | 1100 | 725 | 50/100            |
| 51U 600X1200              | 2405 | 51U | 600 | 19" | 451 | 1200 | 1100 | 725 | 50/100            |
| 52U 600X1200              | 2449 | 52U | 600 | 19" | 451 | 1200 | 1100 | 725 | 50/100            |

Note: 1. Overall Height = Frame Height+Plinth

**Abbreviations**

- H - Frame height
- h - Usable height
- W - Overall width
- w - Usable width
- w1 - Usable width Between Front MTG.Angles
- D - Overall Depth
- d - Usable Depth
- d1 - Usable Depth From Mounting Angle to Angle



## Features

- Conforms to DIN 41494 or Equivalent EIA / ISO / EN / CEA Standard
- Adjustable mounting depth
- 4 No Adjustable, 19" verticals with punched 10 mm Square Hole and Universal 12.7mm-15.875mm-15.875mm alternating hole pattern offers greater mounting flexibility, maximizes usable mounting space
- Numbered U positions
- Universal 44.45MM Pitch Holes For DIN Standard Racks
- State-of-the-art manufacturing methods provide the best product quality and fastest delivery in the industry
- 100% assured compatibility with all equipments conforming to DIN 41494 (General industrial standard for equipments)
- Powder coated finish with seven tank pretreatment process meeting ASTM standard
- Grounding & Bonding Options
- Fan module Mount provision on top cover

## Accessories:

- Cable Basket
- Angle Pair
- Ganging Kit
- Fixed Shelf
- Cantilever Shelf
- Sliding Shelf
- Key Board Shelf
- Power Distribution Units
- Cable Organisers
- Fans and Fan Modules
- Rack Ground Kit
- Plinth
- Casters
- Levellers

## Technical Data:

|                         |  |
|-------------------------|--|
| Basic Frame             | Steel folded   |
| Construction            | Welded   |
| Top & Bottom Cover      | Bolted to Frame with Cable entry exit cut outs                       |
| Front Door              | Lockable Toughened Glass Door OR Lockable Perforated Steel Door      |
| Rear Door               | Lockable Steel Door - Plain / Vented / Perforated                    |
| 19" Mounting Angle      | Formed Steel   |
| Std. Equipment Mounting | DIN Std. 10mm Sq. Slots  |
| Standard Finish         | Powder coated  |
| Standard Colour         | Grey & Off White OR Black  |
| Standard Mounting       | Caster wheels (2 with Brake & 2 without Brake) OR Levelers OR Plinth |
| Rack Standard           | Conforms to DIN 41494 or equivalent standard                         |
| Static Load             | 750Kg with casters. 1250Kg with Levelers / Plinth                    |