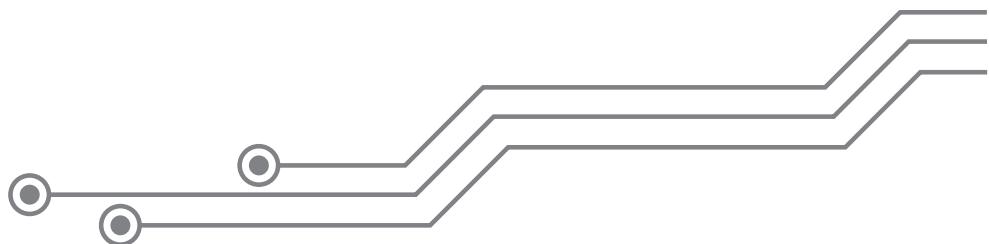


Indian Round Pin

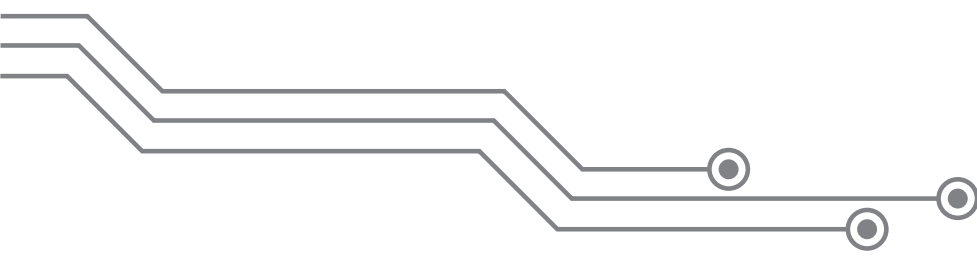
1	Server /IT Rack mount power distribution unit, 1Ph, 230V, 5A, 50/60Hz, Zero U standard with 3 X Indian Round Pin, 5A, Inlet Plug type 6A Indian Round Pin, 5A Fuse - PDU Rating 1.2KVA/ Side feed- 1 mt/ Black	PDU-H-1-IND-A3-X1-Y1-Z0
2	Server /IT Rack mount power distribution unit, 1Ph, 230V, 5A, 50/60Hz, 1 U standard with 4 X Indian Round Pin, 5A, Inlet Plug type 6A Indian Round Pin, 5A Fuse - PDU Rating 1.2KVA/Side Feed-1Mt/Black	PDU-H-1-IND-A4-X1-Y1-Z0
3	Server /IT Rack mount power distribution unit, 1Ph, 230V, 8A, 50/60Hz, 2U standard with 6 X Indian Round Pin 5A, Inlet Plug type 6A Indian Round Pin, 8A Fuse - PDU Rating 1.8KVA/Side feed-1.5Mt/ Black	PDU-H-1-IND-A6-X2-Y1-Z0
4	Server /IT Rack mount power distribution unit, 1Ph, 230V, 16A, 50/60Hz, 2U standard with 6 X Indian Round Pin 5/15A, Inlet Plug type 16A Indian Round Pin, 16A MCB - PDU Rating 3.6KVA/Side feed-1.5Mt/ Black	PDU-H-1-IND-B6-X3-Y1-Z0
5	Server /IT Rack mount power distribution unit, 1Ph, 230V, 16A, 50/60Hz, 2U standard with 6 X Indian Round Pin/ Octagonal, 5/15A, Inlet Plug type 16A Indian Round Pin 16A MCB - PDU Rating 3.6KVA/Rear feed-1.5Mt/ Black	PDU-H-1-IND-C6-X3-Y1-Z0

Note : Other Socket configuration available on request



Indian Sockets Single Phase		
1	Server /IT Rack mount power distribution unit, 1Ph, 230V, 16A, 50/60Hz, Zero U standard with 10 X Indian Round Pin 5A, Inlet Plug type 16A Indian Round Pin, 16A MCB - PDU Rating 3.6KVA/Bottom feed -3Mt/ Black	PDU-V-1-IND-A10-X3-Y4-Z0
2	Server /IT Rack mount power distribution unit, 1Ph, 230V, 16A, 50/60Hz, Zero U standard with 15 X Indian Round Pin 5A, Inlet Plug type 16A Indian Round Pin, 16A MCB - PDU Rating 3.6KVA/Bottom feed -3Mt/ Black	PDU-V-1-IND-A15-X3-Y4-Z0
3	Server /IT Rack mount power distribution unit, 1Ph, 230V, 32A, 50/60Hz, Zero U standard with 12 X Indian Round Pin 5/15A, 16A MCB X 2 Circuits- PDU Rating 7.3KVA/Bottom feed-3Mt/ Black/ Inlet Plug Not Installed	PDU-V-1-IND-B12-X4-Y4-Z0
4	Server /IT Rack mount power distribution unit, 1Ph, 230V, 32A, 50/60Hz, Zero U standard with 12 X Indian Round Pin/ Octogonal 5/15A, 16A MCB X 2 Circuits - PDU Rating 7.3KVA/Bottom feed-3Mt/ Black/ Inlet Plug Not Installed	PDU-V-1-IND-C12-X4-Y4-Z0

Note : Other Socket configuration available on request





MultiPin		
1	Server /IT Rack mount power distribution unit, 1Ph, 230V, 8A, 50/60Hz, 2U standard with 6 X Intel Multi Pin 5A, Inlet Plug type 6A Indian Round Pin, 8A Fuse - PDU Rating 1.8KVA/Side feed-1.5Mt/ Black	PDU-H-1-MP-D6-X2-Y1-Z0
2	Server /IT Rack mount power distribution unit, 1Ph, 230V, 16A, 50/60Hz, 2U standard with 6 X Intel Multi Pin 6/13A, Inlet Plug type 16A Indian Round Pin, 16A MCB - PDU Rating 3.6KVA/Side feed-1.5Mt/ Black	PDU-H-1-MP-E6-X3-Y1-Z0
3	Server /IT Rack mount power distribution unit, 1Ph, 230V, 16A, 50/60Hz, Zero U standard with 10 X Intel Multipin 5A, Inlet Plug type 16A Indian Round Pin, 16A MCB - PDU Rating 3.6KVA/Bottom feed-3Mt/ Black	PDU-V-1-MP-D10-X3-Y4-Z0
4	Server /IT Rack mount power distribution unit, 1Ph, 230V, 16A, 50/60Hz, Zero U standard with 15 X Intel Multipin 5A, Inlet Plug type 16A Indian Round Pin, 16A MCB - PDU Rating 3.6KVA/Bottom feed-3Mt/ Black	PDU-V-1-MP-D15-X3-Y4-Z0
5	Server /IT Rack mount power distribution unit, 1Ph, 230V, 32A, 50/60Hz, Zero U standard with 10 X Intel Multipin 13A, 16A MCB X 2 Circuits - PDU Rating 7.3KVA/Bottom feed-3Mt/ Black/ Inlet Plug Not Installed	PDU-V-1-MP-E10-X4-Y4-Z0
6	Server /IT Rack mount power distribution unit, 1Ph, 230V, 32A, 50/60Hz, Zero U standard with 15 X Intel Multipin 13A, 16A MCB X 2 Circuits - PDU Rating 7.3KVA/Bottom feed-3Mt/ Black/ Inlet Plug Not Installed	PDU-V-1-MP-E15-X4-Y4-Z0

Note : Other Socket configuration available on request

